

产品资料/Product Data

中高压固态软起动器

High Voltage Solid State Soft Starter

VDMV serie



电动机的耗能用了全球大约三分之一的电力，因此，可以肯定地说电动机的可靠运行对我们现代生活起着至关重要的作用

The energy consumption of motors uses about one-third of the world's electricity. Therefore, it is certain that the reliable operation of motors plays a vital role in our modern life

公司简介

Company Profile



苏州韦德韦诺电气科技有限公司是专业从事变频器、软起动器、伺服驱动器、成套电气和自动化设备的研发、制造和销售的现代化、高科技企业。公司自成立以来始终专注于电机驱动与控制、电力电子等核心技术，坚持技术营销与行业营销，坚持为细分行业提供“工控+工艺”的定制化解决方案及进口替代的经营策略，实现企业价值与客户价值共同成长。

公司产品电压等级涵盖220V、380V、690V、1140V、3kV、6kV、10kV，产品功率范围覆盖0.4kW~3MW，并能够根据用户的具体要求实现个性化定制，提供专业的现场指导及售后服务。雄厚的研发能力使得公司产品具有优良的性能、稳固的可靠性、灵活的适应性，奠定了公司在行业中的领先地位。公司产品广泛应用于机床、金属制品、印刷包装、纺织化纤、建材、冶金、煤矿、市政、铁路、塑胶、轨道交通、玻璃制品等行业。

公司通过ISO9001:2016质量管理体系认证、欧共体CE认证、知识产权贯标体系认证和国家强制性CCC认证。并获得“国家级高新技术企业”、“江苏省民营科技企业”、“江苏省科技中小企业”、“江苏省科创板挂牌企业”和“南京师范大学研究生工作站”称号。并获得专利40余项，软件著作权4项。

未来十年，韦德韦诺将继续秉承“厚德载物 一诺千金”的经营理念，立足于工业自动化和能源电力领域，以技术为基础，做大做强工业自动化业务，成为产品结构合理、技术领先、管理高效、盈利能力强等竞争优势明显，国内领先、国际知名、社会责任充分承担、发展和谐的国际专业化产业公司。

Vaidnor Electronic Technology Co., Ltd. is a modern and high-tech enterprise specializing in the R & D, manufacturing and sales of frequency converters, soft starters, servo drives, complete sets of electrical and automation equipment. Since its establishment, the company has always focused on core technologies such as motor drive and control and power electronics, adhered to technology marketing and industry marketing, and insisted on providing customized solutions of "industrial control + process" and import substitution for the subdivided industries, so as to realize the common growth of enterprise value and customer value.

The voltage level of the company's products covers 220V, 380V, 690V, 1140V, 3kV, 6kV and 10kV, and the power range of the products covers 0.4KW ~ 3MW. It can realize personalized customization according to the specific requirements of users, and provide professional on-site guidance and after-sales service. The strong R & D capability makes the company's products have excellent performance, stable reliability and flexible adaptability, which has established the company's leading position in the industry. Our products are widely used in machine tools, metal products, printing and packaging, textile and chemical fiber, building materials, metallurgy, coal mines, municipal, railway, plastics, rail transit, glass products and other industries.

The company has passed ISO9001:2016 quality management system certification, CE certification, intellectual property implementation system certification and national mandatory CCC certification. It has won the titles of "national high-tech enterprise", "private science and technology enterprise in Jiangsu Province", "small and medium-sized science and technology enterprise in Jiangsu Province" and "graduate workstation of Nanjing Normal University". And obtained more than 30 patents and 2 software copyrights.

In the next ten years, Vaidnor will continue to adhere to the business philosophy of "good will, good deeds and good promise". Based on the field of industrial automation and energy and power, and based on technology, weideweno will expand and strengthen the industrial automation business. It will become an international professional industrial company with obvious competitive advantages such as reasonable product structure, leading technology, efficient management and strong profitability. It will be a domestic leading, internationally renowned, fully undertaking social responsibilities and developing harmoniously.

目录 Catalogue

05	产品概述 Product Overview
06	规格及型号 Model and specification
06	软起动装置工作原理 Operating principle
07	主要技术指标 Technical indicators
08	VDMV标准系列 Standard soft starter
09	VDMV系列一体机 Integrated soft starter
10	安全警告与注意事项 Safety and Warning
12	选型及外形尺寸 Model selection and size
13	应用场合 Application occasion

产品概述 Overview

VDMV系列高压电动机固态软起动装置是融合了电力电子技术和最新控制理念的新一代高压电动机起动设备，主要应用于对中高压电动机的起动、运行和停车的控制与保护。装置以大功率高压半导体器件为载体，采用完善的高压绝缘隔离技术和先进控制理念，避免电动机起动时大的电流冲击，避免了电网电压骤降，可以降低供电变压器及相关设备容量，节约了项目的投资费用。产品广泛的应用于石油、化工、大型钢铁、电力和矿山等工业领域，能很好的和水泵、压缩机、风机、搅拌机、皮带机等机电设备配套使用，是理想的高压电动机起动和保护设备。

VDMV High-voltage Solid Soft Starter for high-voltage motor is a new generation of high-voltage motor starter integrating power electronics technology and the new control concept, which is mainly used to control and protect the starting, running and stopping of medium and high-voltage motors. The device uses high-power high-voltage semiconductor devices as the carrier, and adopts perfect high-voltage insulation isolation technology and advanced control concept to avoid large current impact when the motor starts, avoid grid voltage sag, reduce the capacity of power supply transformer and related equipment, and save the investment cost of the project. The products are widely used in petroleum, chemical industry, large steel, electric power, mining and other industrial fields. They can be well matched with water pumps, compressors, fans, mixers, belt conveyors and other electromechanical equipment. They are ideal high-voltage motor starting and protection equipment.



符合标准及使用环境 Environmental&Standards

• 符合标准 Standards

GB311.1-2012《绝缘配合第一部分：定义、原则和规则》
GB311.1-2012 Insulation coordination Part1: definitions, principles and rules
GB3906-2006《3.6KV~40.5KV交流金属封闭开关设备和控制设备》
GB3906-2006 3.6KV-40.5KV AC metal-enclosed switch gear and control gear
GB/T13422-2013《半导体变流器电气试验方法》
GB/T13422-2013 Semiconductor converter-electrical test method
GB/T4208-2008《外壳防护等级（IP代码）》
GB/T4208-2008 Degrees of protection provided by enclosure (IP code)
GB/T11022-2011《高压开关设备和控制设备标准的共用技术要求》
GB/T11022-2011 Common specifications for high-voltage switch gear and control gear standards
GB14048.6-2008《低压开关设备和控制设备 第4-2部分接触器和电动机起动器交流半导体电动机控制器和启动器（含软起动装置）》
GB14048.6-2008 Low-voltage switch gear and control gear - Part 4-2: contactors and motor starters AC semiconductor motor controllers and starters (including soft starter)

• 使用环境 Operating environment

输入电源：电压持续波动不超过 $\pm 10\%$ ，短暂波动不超过 $+15\% \sim -10\%$ ；频率波动不超过 $\pm 2\%$ ，频率变化速度不超过 $\pm 10\%$ 。
AC input power supply: Voltage continuous fluctuation does not exceed $\pm 10\%$ and short fluctuation does not exceed $+15\% \sim -10\%$; Frequency fluctuation does not exceed $\pm 2\%$ and change rate does not exceed $\pm 10\%$.

环境温度：
存储： $-25^{\circ}\text{C} \sim +55^{\circ}\text{C}$ ；
运行： $-5^{\circ}\text{C} \sim +40^{\circ}\text{C}$ ，日平均温度不超过 $+35^{\circ}\text{C}$ 。
Ambient temperature
Storage: $-25^{\circ}\text{C} \sim +55^{\circ}\text{C}$
Running: $-5^{\circ}\text{C} \sim +40^{\circ}\text{C}$, with average daily temperature not above $+35^{\circ}\text{C}$.

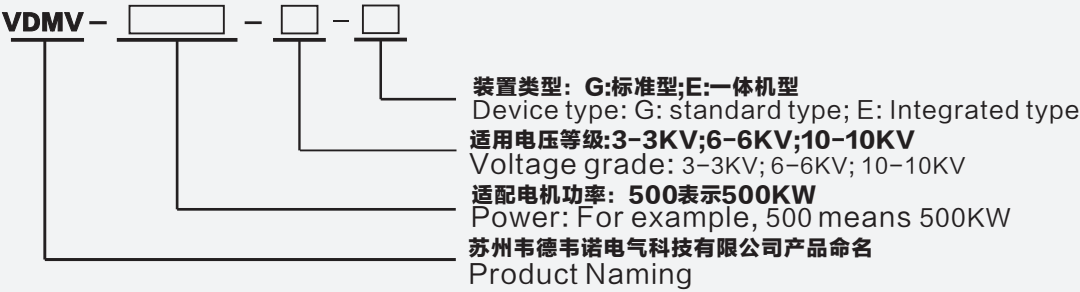
海拔高度：海拔2000m以下；
2000~4000m须降容使用，降容系数0.007%/m。
Altitude:
Less than 2,000m sea level;
2000~4000m须降容使用，降容系数0.007%/m。
For 2000~4000m, conduct derating use with derating coefficient of 0.007%/m.

相对湿度：不大于95%，无冷凝。
Relative humidity:
Be no more than 95%, with no condensation.

污染等级：3
Pollution class:3

规格型号 Equipment model

● 软起动装置型号及说明 Model description

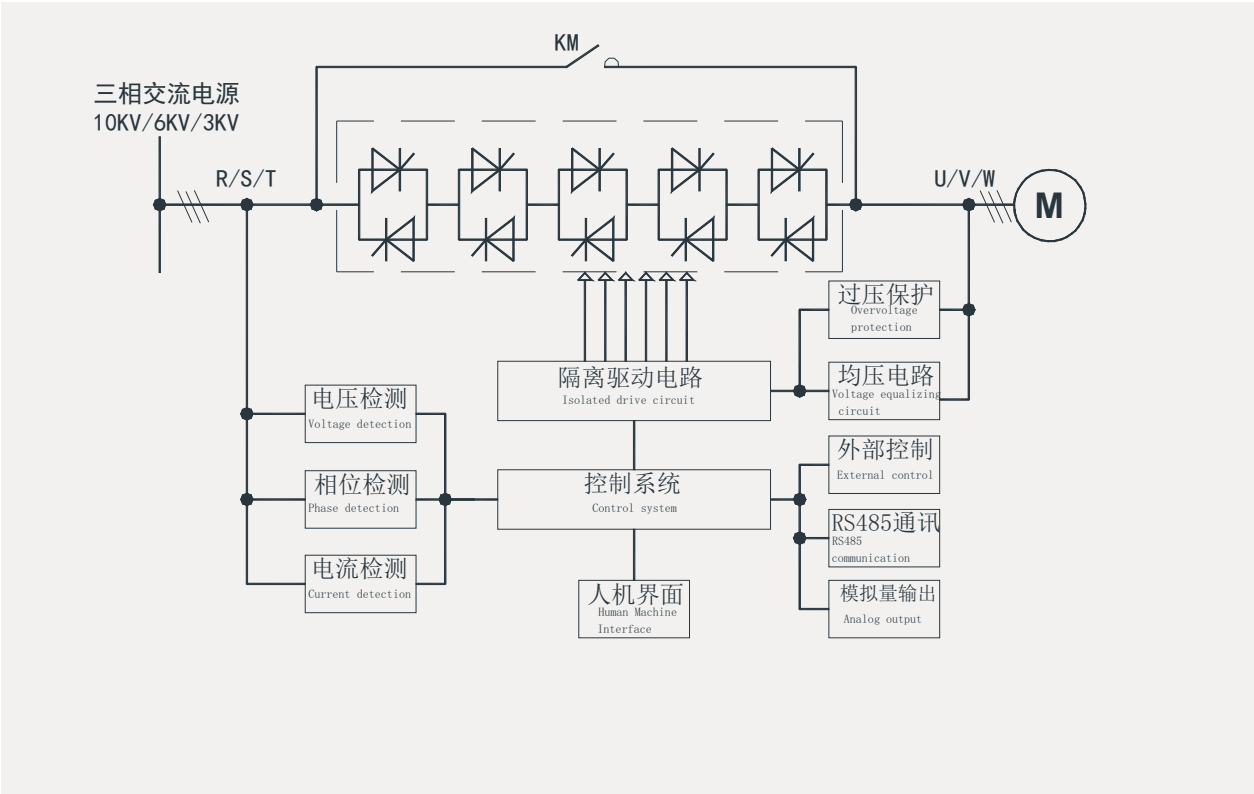


注:不注明装置类型时,默认为标准G型高压软起动器
Note: If the device type is not specified, the standard G type high-voltage soft starter is used by default

工作原理 Working principle

高压电机固态软起动器采用多个晶闸管串接于三相交流电压和三相电动机之间, 采用MCU信号传输同时调节多个独立的反并联晶闸管阀组件的延时导通角度来改变三相电动机的交流输入电压,达到了恒流起动或者电机侧电压按照一定斜率变化起动的目的,当起动完成后,三相旁路真空接触器KM自动吸合,电动机投入电网运行(见下图)。

High voltage motor solid state soft starter uses multiple thyristors connected in series between three-phase AC voltage and three-phase motor, and uses MCU signal transmission to simultaneously adjust the delayed conduction angle of multiple independent anti parallel thyristor valve assemblies to change the AC input voltage of three-phase motor, so as to achieve the purpose of constant current starting or motor side voltage starting according to a certain slope change. When the starting is completed, three-phase bypass vacuum contactor KM automatically pulls in, The motor is put into grid operation (see the figure below)



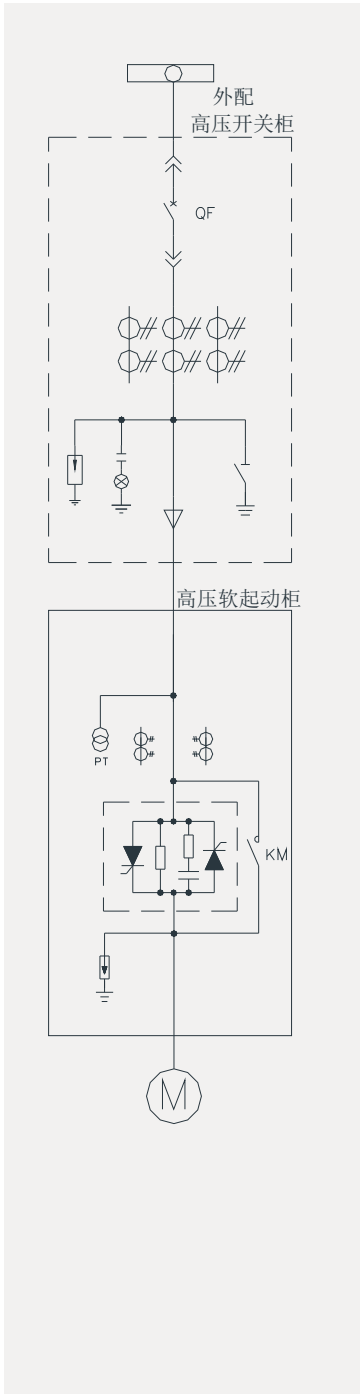
主要技术指标 Main technical indicators

基本参数 Basic parameters			
负载种类 Load type		三相中压异步电动机、同步电动机 Three phase asynchronous motor.	
交流电压 AC power supply		3KV~10KV(-15%~+10%)	
过电压 Voltage characteristics		线电压 Line voltage 3KV 6KV 10KV	短时工频（1min） Withstand voltage test 18KV 35KV 42KV
		雷击电压 Lightning overvoltage test 30KV 60KV 75KV	
过载容量 Overload capacity		连续：125%控制器标称值 Continuous: 125% of controller nominal value 过载：200%/60S Overload:200%/60S	
频率 Frequency		50Hz(±2Hz)	
主回路组成 Composition of main circuit		3KV:12SCRS 6KV:18SCRS 10KV:30SCRS	
相序 Phase sequence		允许在任何相序下工作 Can work in any phase sequence	
瞬时过电压保护 Instantaneous overvoltage protection		dv/dt吸收网络，复合过电压保护器 dv/dt absorption network,Composite overvoltage protection	
冷却 Cooling mode		自然冷却 Natural cooling	
旁路接触器 Bypass contactor		具备直接起动的容量 For bypass and direct starting	
控制电源 Control power		用户提供2或3线220VAC 2-wire or 3-wire AC220V	
基本功能 Basic function			
起动停车方式 Starting&stopping control		电流限流+斜坡起动、限流起动、点动、突跳+电压斜坡起动； Voltage ramp,Current limiting,Jogging,Ramp kick 自由停车、软停车 Free stop, soft stop	
控制方式 Operation mode		键盘、本地、远程、机旁可选； Keyboard,Cabinet button,Keyboard+Cabinet button,remote control	
数字量输入 DI		起动、停机、复位、可编程输入（可选）；Run,Stop,Reset,Programmable input	
数字量输出 DO		故障信号、旁路信号、停机信号、备妥信号、可编程输出继电器等 Fault output, bypass output, shutdown output, ready output, programmable output	
模拟量输出 AO		4-20mA输出信号 Analog output	
保护功能 Protection function			
缺相保护 Phase failure protection		在起动或者运行过程中，任一相断开时保护； Protect when any phase is disconnected during startup or operation.	
起动过流，运行过流 Starting overcurrent		在起动或运行过程中，电流大于过流设置值时保护； During startup or operation, protect when the current is greater than the overcurrent setting value.	
起动过载，运行过载 Start overload,Running overload		在起动或运行过程中，按照设置的反时限特性曲线进行保护； During startup or operation, the protection shall be carried out according to the set inverse time characteristic curve.	
起动超时 Start overtime		起动过程中，起动时间超过设置时间后保护； Protec after starting time exceeds the set time during starting	
过压保护 Overvoltage		软起动器检测的进线电源电压大于过压设置值时保护； Protect when the incoming line power supply voltage detected by the soft starter is greater than the overvoltage setting value.	
欠压保护 Undervoltage		软起动器检测的进线电源电压小于欠压设置值时保护； Protect when the incoming line power supply voltage detected by the soft starter is less than the undervoltage setting value.	
电流不平衡保护 Current unbalance		在起动或运行过程中，三相电流不平衡超过不平衡度的设置时保护； During startup or operation, the three-phase current unbalance exceeds the setting of unbalance degree.	
欠载保护 Underload		在运行过程中，电机电流小于欠载保护的设置值时； During operation, the motor current is less than the setting value of underload protection.	

通讯功能 Communication function	
通讯接口 Communication interface	RS485通讯, MODBUS RTD通讯协议, 完全电器隔离; Rs485 communication, MODBUS RTD communication protocol, complete electrical isolation.
操作界面 Operation interface	
人机界面 Human Machine Interface	LCD中英文显示/触摸屏 LCD Chinese and English display/touch screen.
仪表显示 Instrument display	数字电压表,三相数字电流表 Multifunctional electric instrument.

VDMV-G型标准系列 Standard soft starter

产品特点:
Product features:

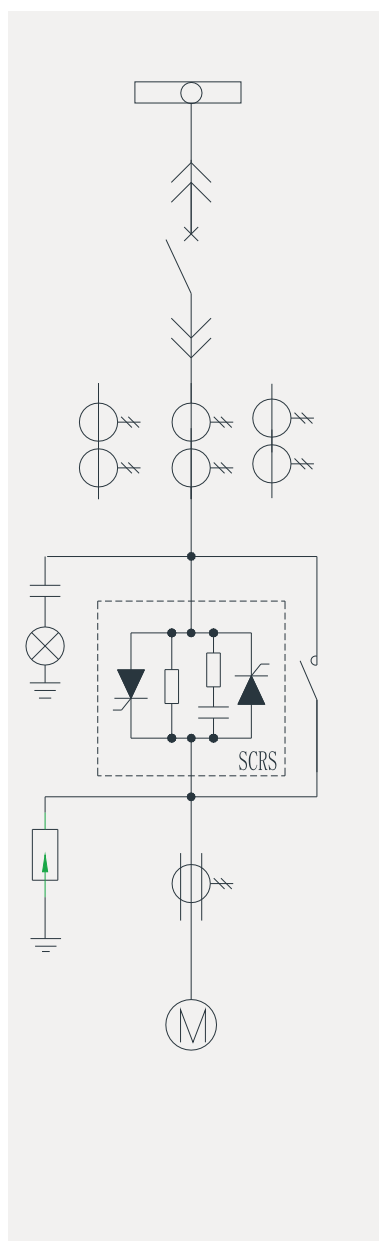


- 标准系列高压软起动器内部集成了三相可控硅阀组、真空旁路接触器、高压电压互感器、高压电流互感器等部件, 必须与配有真空断路器的开关柜配合使用;
The standard series high-voltage soft starter is internally integrated with three-phase silicon controlled valve group, vacuum bypass contactor, high-voltage voltage transformer, high-voltage current transformer and other components, which must be used together with the switch cabinet equipped with vacuum circuit breaker.
- 柜体采用仿KYN28柜体结构, 采用敷铝锌板材料, 经多重折弯工艺制作而成, 外观美观大方, 安全性高, 可方便的同现场标准开关柜实现并柜;
The cabinet body is made of KYN28-12 imitation cabinet body structure, aluminum coated zinc plate material and multiple bending process, with beautiful appearance and high safety, which can be conveniently combined with the standard switch cabinet on site.
- 主回路采用三相可控硅阀组件结构, 模块化安装方式, 具备多重过电压吸收、保护技术;
The main circuit adopts three-phase silicon controlled valve assembly structure, modular installation mode, and multiple overvoltage absorption and protection technologies;
- 可控硅采用静、动态均压方式, 高脉冲电流触发和后备触发相结合, 保证设备运行的安全性和可靠性;
The control system adopts high-performance micro control chip, which makes the control of the device real-time, efficient, reliable and stable
- 控制系统采用高性能微控制芯片, 使装置的控制实时高效、可靠性高稳定性好;
The control system adopts high-performance micro control chip, which makes the control of the device real-time, efficient, reliable and stable
- 测量功能: 平均电流、A/B/C三相电流、进线电源电压, 相序测量;
Measurement function: average current, A/ B/ C three-phase current, incoming power supply voltage, phase sequence measurement.
- 保护功能: 雷击过电压保护, 晶闸管静态、动态均压, 缺相、过压、欠压、启动过流、运行过流、启动过载、运行过载、欠载、电流不平衡、启动超时、外部输入故障检测等, 保护动作时间可设置;
Protection function: lightning overvoltage protection, static and dynamic voltage sharing of thyristor, phase loss, overvoltage, undervoltage, starting overcurrent, running overcurrent, starting overload, running overload, underload, current imbalance, starting timeout, external input fault detection, etc. The protection action time can be set;

- 多种起动停车方式：电流限流+斜坡起动、限流起动、点动、突跳+电压斜坡起动等，自由停车和 软停车方式可供选择；
- Multiple starting and stopping modes: current limiting+ramp starting, current limiting starting, inching, sudden jump+voltage ramp starting, etc. Free stopping and soft stopping modes are available.
- 显示功能：中文大屏幕液晶显示系统，操作简便，更具人性化；
- Display function: Chinese/English large screen LCD system, easy to operate, more user-friendly.
- 通讯功能：完全电气隔离RS485通讯，MODBUS RTU协议，可采用上位机进行集中控制；
- Communication function: completely electrically isolated RS485 communication, MODBUS RTU protocol, and centralized control by upper computer.
- 具备外控起动、停车、复位输入和故障、旁路、可编程输出，具有4-20mA模拟量输出
- external control starting, stopping, reset input and fault, bypass, programmable output, and 4-20mA analog output.

VDMV-E型一体机 Integrated soft starter

产品特点: Product features:



- 高压固态软起动器一体机内部集成了高压真空断路器、微机综合保护器、三相可控硅阀组、真空旁路接触器、高压电压互感器、高压电流互感器等部件，实现了高压开关柜、软起动柜和旁路柜的三合一，无需外配开关柜或者运行柜；
- The high-voltage solid state soft starter integrated machine is internally integrated with high-voltage vacuum circuit breaker, microcomputer integrated protector, three-phase silicon controlled valve group, vacuum bypass contactor, high-voltage voltage transformer, high-voltage current transformer and other components, realizing the integration of high-voltage switch cabinet, soft start cabinet and bypass cabinet, without the need for external switch cabinet or operation cabinet.
- 柜体采用仿KYN28柜体结构,采用敷铝锌板材料,经多重折弯工艺制作而成,外观美观大方,安全性高,柜体与标准开关柜一致,可方便实现与现场其他高压开关柜并柜,使的整体系统布局合理、美观,高可靠的连锁装置,满足“五防”要求；
- The cabinet body is made of KYN28 imitation cabinet body structure, aluminum coated zinc plate material and multiple bending process. It has beautiful appearance and high safety. The cabinet body is consistent with the standard switch cabinet, which can be easily combined with other high-voltage switch cabinets on site, making the overall system layout reasonable, beautiful, and highly reliable inter-locking device, meeting the requirements of "five prevention"
- 主回路采用三相可控硅阀组件结构，模块化安装方式，具备多重过电压吸收、保护技术；
- The main circuit adopts three-phase silicon controlled valve assembly structure, modular installation mode, and multiple over-voltage absorption and protection technologies.
- 可控硅采用静、动态均压方式，高脉冲电流触发和后备触发相结合,保证设备运行的安全性和可靠性；
- Static and dynamic voltage sharing mode is adopted for SCR, and high pulse current trigger and backup trigger are combined to ensure the safety and reliability of equipment operation.

- 控制系统采用高性能微控制芯片，使装置的控制实时高效、可靠性高、稳定性好；
- The control system adopts high-performance micro control chip, so that the control of the device is real-time, efficient, reliable and stable.
- 测量功能：平均电流、A/B/C三相电流、进线电源电压，相序测量；
- Measurement function: average current, A/B/C three-phase current, incoming power supply voltage, phase sequence measurement.
- 保护功能：微机综合保护器功能；软起动器保护功能：雷击过电压保护，晶闸管静态、动态均压，缺相、过压、欠压、起动过流、运行过流、起动过载、运行过载、欠载、电流不平衡、起动超时、外部输入故障检测等，保护动作时间可设置；
- Protection function: microcomputer integrated protector function; Protection function of soft starter: lightning over-voltage protection, static and dynamic voltage sharing of thyristor, phase loss, over-voltage, undervoltage, starting over-current, running over-current, starting overload, running overload, underload, current imbalance, starting timeout, external input fault detection, etc. The protection action time can be set.
- 多种起动停车方式：电流限流+斜坡起动、限流起动、点动、突跳+电压斜坡起动等，自由停车和软停车方式可供选择；
- Multiple starting and stopping modes: current limiting + ramp starting, current limiting starting, inching, sudden jump+voltage ramp starting, etc. Free stopping and soft stopping modes are available.
- 显示功能：中文大屏幕液晶显示系统，操作简便，更具人性化；
- Display function: Chinese/English large screen LCD system, easy to operate, more user-friendly.
- 通讯功能：完全电气隔离RS485通讯，MODBUS RTU协议，可采用上位机进行集中控制；
- Communication function: completely electrically isolated RS485 communication, MODBUS RTU protocol, and centralized control by upper computer.
- 具备外控起动、停车、复位输入和故障、旁路、可编程继电器输出，具有4-20mA模拟量输出。
- external control starting, stopping, reset input and fault, bypass, programmable output, and 4-20mA analog output.

安全警告与注意事项 Safety Warning & Attention

安全警告 Safety Warning

1. 软起动装置的安装、操作及维护，应严格按照本手册及相关国家标准及行业惯例进行；
1. The installation, operation and maintenance of the soft starter shall be carried out strictly in accordance with this manual, relevant national standards and industry practices;
2. 软起动装置属高压设备，带有高压电源和控制电源，必须由经过授权和培训的人员来操作和维护，高压停电以后，由于电机上的感应高压，仍有危险，应泄放电以后才能操作；
2. The soft starter is high-voltage equipment with high-voltage power supply and control power supply, and thus must be operated and maintained by authorized and trained personnel. After high-voltage power outage, it is still dangerous due to the induced high voltage on motor and operation shall be done after discharging.
3. 维护电机和软起动装置之前必须切断所有电源；
3. All power must be cut off before conducting maintenance on the soft starter or motor.
4. 高压开关柜和软起动柜的联锁，以及软起柜内的连锁，是保证安全的重要措施，不可忽略；
4. The interlocks between high voltage switch cabinet and soft starter cabinet, and inside soft starter cabinet are important measures for safety assurance and can not be ignored.
5. 保证软起动柜可靠接地。
5. Make sure the soft starter cabinet is grounded reliably.

注意事项 Precautions

1. 须由专业技术人员安装或指导安装本设备；
1. Require qualified technicians to install or guide the installation the soft starter.
2. 尽可能保证负载电机功率、规格和本设备匹配；
2. Make sure that the power and specification of the motor match with the soft starter whenever possible.

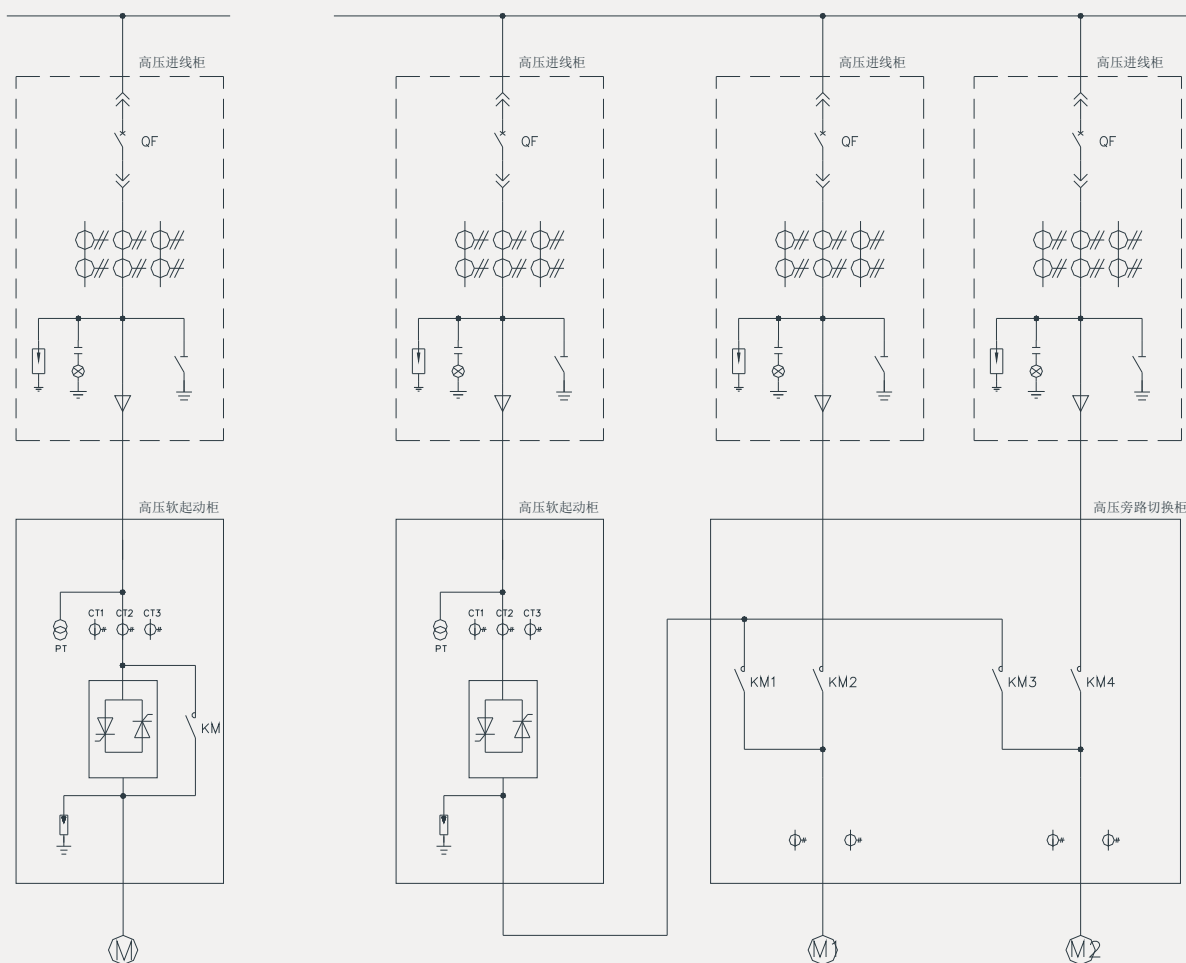
3. 用于提高功率因素的无功功率补偿电容器，不得连接在软起动装置输出端，否则将损坏软起动装置中的可控硅功率器件；

3. The reactive power compensation capacity, used for the improvement of power factor, shall not be connected to the output of the soft starter, otherwise the SCR power elements in the soft starter will be damaged.

4. 禁止用兆欧表测量软起动装置输入与输出间的绝缘电阻，否则可能因过压而损坏软起动装置的可控硅和控制板。测量电机绝缘时，也应遵守上述原则。

4. It is forbidden to measure the insulation resistance between the input and output of the soft starter with megameter, otherwise the SCR and the control panel of the soft starter may be damaged due to overvoltage. When measuring motor insulation, the above principle shall also be observed.

典型应用图 Typical application diagram



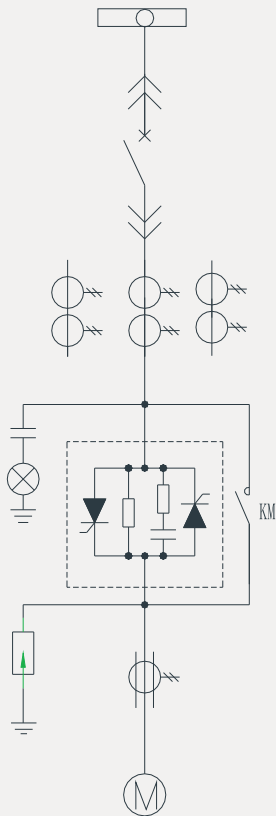
一拖一

**One soft start
drives one motor**

一拖二

**One soft start
drives two motors**

VDMV-G



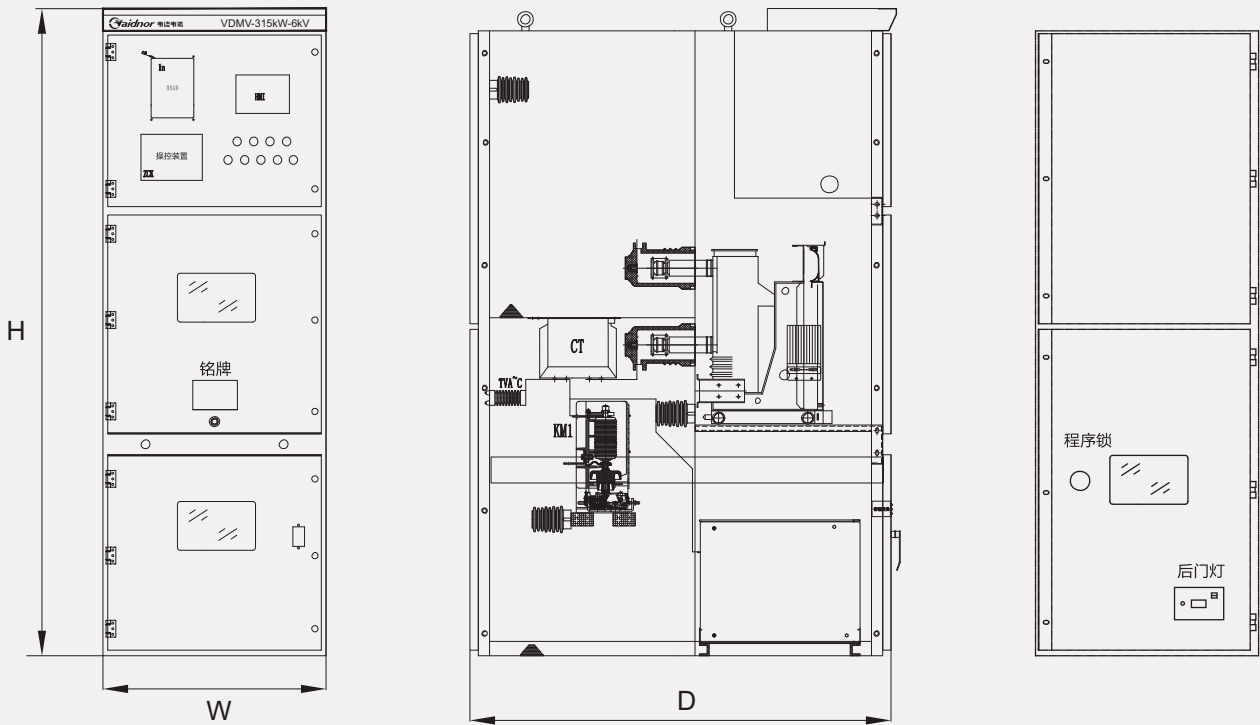
VDMV-E

使用说明：

Instructions:

- 1、高压软起动装置柜内的高压断路器和真空接触器采用交流或者直流电源控制，用户需要提供相应控制电源。
- 1. The high-voltage circuit breaker and vacuum contactor in the high-voltage soft starting device cabinet are controlled by AC or DC power supply, and users need to provide corresponding control power supply.
- 2、柜体采用敷铝锌板制作，用户如有特殊要求，尺寸及板材可按照用户要求定制。
- 2. The cabinet body is made of aluminum coated zinc plate. If the user has special requirements, the size and plate can be customized according to the user's requirements.
- 3、用户如需要和现场开关柜并柜，需提供母线开孔信息。
- 3. If the user needs to merge with the on-site switch cabinet, please provide the bus opening information.

选型及外形尺寸 Model selection and size



Cabinet shape

VDMV外型尺寸及安装尺寸示意图 Outline dimension and installation dimension diagram

电压 Voltage	型号 Model	功率 (kW) Power	电流(A) Current	标准柜尺寸 (mm) Standard cabinet			一体柜尺寸 (mm) Integrated cabinet		
				W	H	D	W	H	D
3kV	VDMV-620kW-3kV	620	150	1000	2300	1500	1000	2300	1500
	VDMV-830kW-3kV	830	200	1000	2300	1500	1000	2300	1500
	VDMV-1100kW-3kV	1100	270	1000	2300	1500	1000	2300	1500
	VDMV-3500kW-3kV	3500	850	1300	2300	1660	/	/	/
6kV	VDMV-500kW-6kV	500	63	1000	2380	1500	1000	2300	1500
	VDMV-800kW-6kV	800	100	1000	2380	1500	1000	2300	1500
	VDMV-1000kW-6kV	1000	125	1000	2380	1500	1000	2300	1500
	VDMV-1400kW-6kV	1400	175	1000	2380	1500	1000	2300	1500
	VDMV-2150kW-6kV	2150	270	1000	2380	1500	1000	2300	1500
	VDMV-3400kW-6kV	3400	400	1300	2300	1660	/	/	/
	VDMV-4500kW-6kV	4500	500	1300	2300	1660	/	/	/
10kV	VDMV-500kW-10kV	500	38	1000	2300	1500	1000	2300	1500
	VDMV-800kW-10kV	800	60	1000	2300	1500	1000	2300	1500
	VDMV-1000kW-10kV	1000	76	1000	2300	1500	1000	2300	1500
	VDMV-1650kW-10kV	1650	120	1000	2300	1500	/	/	/
	VDMV-2000kW-10kV	2000	145	1000	2300	1500	1000	2300	1500
	VDMV-3500kW-10kV	3500	255	1000	2300	1500	1000	2300	1500
	VDMV-4500kW-10kV	4500	350	1000	2300	1500	1000	2300	1500
	VDMV-5600kW-10kV	5600	405	1300	2300	1660	/	/	/
	VDMV-6650kW-10kV	6650	480	1300	2300	1660	/	/	/
	VDMV-7100kW-10kV	7100	520	1300	2300	1660	/	/	/
	VDMV-8000kW-10kV	8000	600	1300	2300	1660	/	/	/

其他非标功率，请单独咨询我公司。For other non-standard power, please consult our company separately.

● 订货须知 Ordering Instructions

用户订货时需明确一下内容 The order sequence of the user specifies the following contents

- 电动机型号、额定电压、额定功率、额定电流、额定转速；
1. Motor model, rated voltage, rated power, rated current, rated speed
- 负载类型；
2. Load type
- 装置主回路进出线方式；
3. Incoming and outgoing mode of device main circuit
- 如有特殊要求，请与公司联系并在订货时说明。
4. If there are special requirements, please contact the company and explain them when ordering

应用场合

Application scope

高压软起动装置可以广泛应用于采用中高压三相异步电动机提供动力的各行各业。

The high-voltage soft starter can be widely applied to every industry or trade using high-voltage three-phase asynchronous motors

重工行业

Heavy Industry

- 冶金
Metals
- 矿山
Mining
- 制浆造纸
Pulp & Paper
- 石油/天然气
Oil/Gas
- 化工
Chemical
- 电力
Power
- 水泥
Cement & Glass

轻工行业

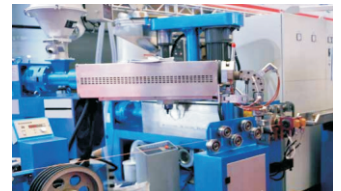
Light Industry

- 食品饮料
Food & Beverage
- 建筑
Building Materials
- 印刷包装
Printing & Packaging
- 制药
Pharmaceutical
- 提升
Crane
- 纺织
Textile
- 橡胶塑料
Rubber and plastic

基础设施行业

Infrastructure Industry

- 暖通空调-空调及制冷
HVAC - ACR
- 暖通空调-交通及通风
HVAC - TRA&V
- 暖通空调-供热
HVAC - HTE
- 水行业-水泵
W&WW-Pump
- 水行业-水处理
W&WW-Treatment
- 水行业-水务工程
W&WW-Engineering
- 试验台
Test Bench





联系我们/contact us
www.vaidnor.com

地址：江苏省苏州市太仓港经济技术开发区东双浮路8号
Address: No. 8, Dongshuangfu Road, Taicang Port Economic and
Technological Development Zone, Suzhou, Jiangsu

苏州韦德韦诺电气科技有限公司服务热线/Service hotline

电话/Tel: 400-0881-678 / 0512-5370 8888

邮箱/Email: vdn@vaidnor.com

样本所载述的产品资料以实物为准，若有变更恕不另行通知，
苏州韦德韦诺电气科技有限公司拥有最终解释权。

The product information contained in the sample
is subject to the real object, and is subject to
change without notice, Vaidnor has the final
interpretation right

MADE IN CHINA